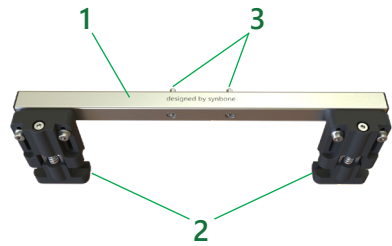
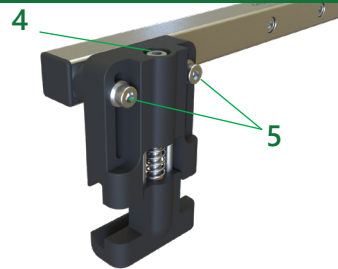


# Instructions for use ROB Knee Holder Rail System

## Product Overview



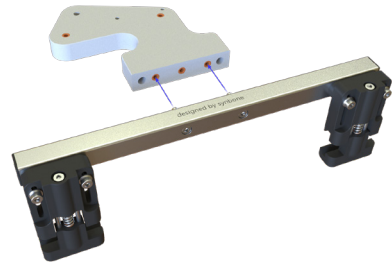
Rail Adapter components



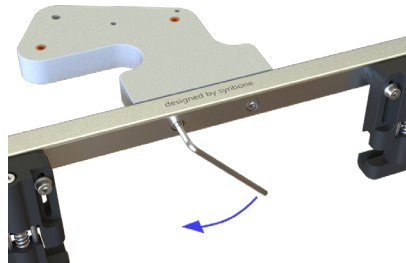
Rail Clamp components

1. Connector bar
2. Rail Clamp
3. Attachment screws
4. Clamping screw
5. Height adjustment screws

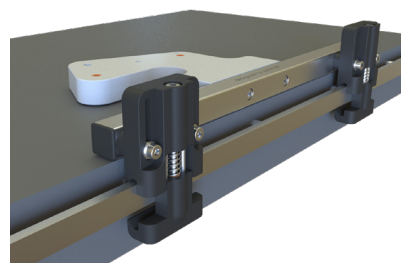
## Assembling and Rail Attachment (The following is for use with left-sided knee models)



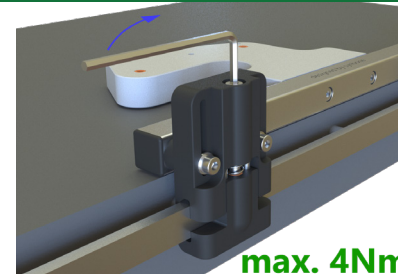
Attach the Rail Adapter to the Base Plate...



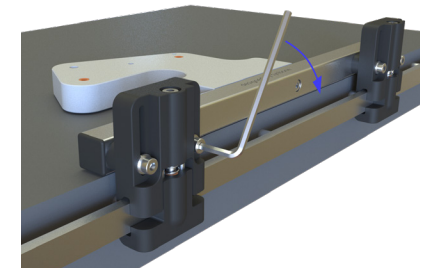
... and tighten the attachment screws (3) with the Allen Key provided with the system



Make sure that the height adjustment screws (5) are loose and attach both Rail Clamps (2) to the rail

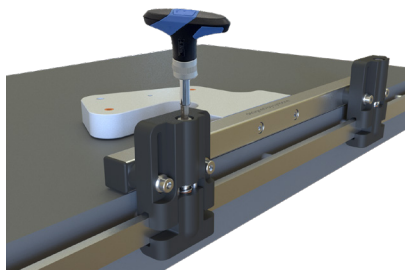


Tighten the clamping screw (4) until the connection to the rail is stable. Repeat the step for the second clamp

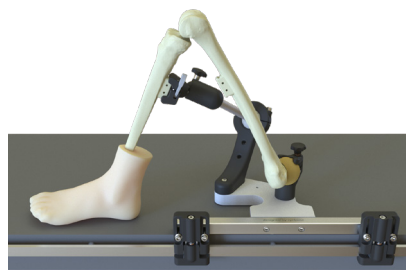


Confirm that the Base Plate is lying on the table and tighten the height adjustment screws (5) on both clamps

## Assembling



To prevent overtightening it is highly recommended to use the 4Nm torque wrench. (provided as of May 2024)



To use the ROB Knee Holder System with right-sided knee models the Base Plate has to be flipped by 180°



To use the ROB Knee Holder System with right-sided knee models the Base Plate has to be flipped by 180°

Failure to follow these instructions during setup, use, and disassembly may result in damage to the system. Please read and follow the instructions for optimal functionality throughout the life of the product.